



Instructions for use of SICAT ACCESSGUIDE

English



TABLE OF CONTENTS

1	Intended use and indications for use	4
2	Safety information	5
2.1	Definition of the danger levels	5
2.2	Qualifications of operating personnel.....	6
3	SICAT ACCESSGUIDE	7
3.1	Design and manufacturing.....	7
3.2	Definition of terms.....	8
4	Planning a surgical guide	10
4.1	SICAT ACCESSGUIDE workflow	11
4.2	Preparation of a SICAT ACCESSGUIDE surgical guide	12
5	Planning instructions	14
6	Scanning instructions for SICAT ACCESSGUIDE	15
6.1	Instructions for 3D X-ray scans	15
6.2	Instructions for optical impressions.....	15
6.3	Preventing potential errors.....	17
7	Ordering a surgical guide	20
7.1	Ordering an ACCESSGUIDE surgical guide (option 1)	20
7.2	Ordering an ACCESSGUIDE surgical guide (option 2)	20
8	Unpacking the surgical guide	22
9	Handling of the surgical guide	23
9.1	Using orthograde SICAT ACCESSGUIDE surgical guides.....	26
10	Disposal	33
11	Reporting	33
12	SICAT documentation	34
13	Safety instructions	35
14	Manufacturer and support	41

1 INTENDED USE AND INDICATIONS FOR USE

SICAT **ACCESSGUIDE** is a patient-specific drill guide for orthograde and retrograde root canal treatment. It aids as an accessory for executing a surgical plan depending on previously identified surgical pathways. SICAT **ACCESSGUIDE** is manufactured in two variants, the orthograde SICAT **ACCESSGUIDE** and the retrograde SICAT **ACCESSGUIDE**.

Indications for use

The SICAT **ACCESSGUIDE** is intended for guiding drills during endodontic treatment.

Opening of pathways in the intra-oral region

- Opening of pathways in the jawbone for endodontic treatments (retrograde variant)
- Opening of pathways in teeth for endodontic treatments (orthograde variant)

Contraindications

- Insufficient tooth status for stable support of the drill guide

The SICAT **ACCESSGUIDE** may only be used by healthcare professionals.

Important note

Currently, SICAT **ACCESSGUIDE** is only available as orthograde variant. Opening of pathways in the jawbone for endodontic treatments will only be available with the retrograde variant.

2 SAFETY INFORMATION

It is important that you read the following safety-related sections in order to prevent injuries to operating personnel or patients, as well as material damage.

2.1 DEFINITION OF THE DANGER LEVELS

The following safety labeling is used in these instructions for use:



WARNING

Indicates a dangerous situation, which could result in death or severe injuries if not prevented.



CAUTION

Indicates a dangerous situation, which could result in smaller injuries if not prevented.

NOTICE

Indicates information deemed important, but not relevant to safety.

2.2 QUALIFICATIONS OF OPERATING PERSONNEL



WARNING

Use of the surgical guides by unqualified personnel could pose a health hazard to the patient or lead to improper treatment.

The surgical guides may only be used by qualified personnel.

You must meet the following requirements to use the surgical guide:

- You have read the instructions for use.
- You have familiarized yourself with the requirements for the use of the surgical guides.
- You are able to recognize the limits of usability and take suitable steps where necessary.

3 SICAT ACCESSGUIDE

⚠ **CAUTION!** Federal Law (USA) restricts use of this device to or on the order of a physician, dentist or licensed practitioner.

SICAT **ACCESSGUIDE** surgical guides support you in implementing the root treatment plan you have created using SICAT Endo. SICAT **ACCESSGUIDE** surgical guides are custom-made for each patient and guide your drill to the planned positions in the patient's tooth by means of guide sleeves.



SICAT ACCESSGUIDE



3.1 DESIGN AND MANUFACTURING

The SICAT laboratory designs the SICAT **ACCESSGUIDE** surgical guides based on 3D X-ray scans, optical impressions and your planning in SICAT Endo.

If you do not have the equipment to produce optical impressions, you may also send the stone models to SICAT. They will produce the optical scans of the stone models for you.

You will receive one SICAT **ACCESSGUIDE** surgical guide for each planned drilling site.

3.2 DEFINITION OF TERMS

EndoLine

An EndoLine is a multi-functional measuring line, which serves to mark the root canal to be treated and to locate the root apex. Please refer to the SICAT Endo instructions for use for further information regarding the use of EndoLines.

Drill canal

Drilling path planned on the basis of the EndoLine that can be visualized and edited in SICAT Endo.

Drill depth

The drill depth is the distance between the upper edge of the sleeve and the end of the drill canal. It will be indicated in SICAT Endo when you plan the drill canals. You will also find the planned drill depth on the surgical guide report, which SICAT will supply to you with the surgical guides.

Guide ID

The guide ID is a unique code that each surgical guide is provided with. The guide ID enables you to verify at any time that the supplied surgical guide matches your order. You will also find the guide ID on the surgical guide report.

Diameter

You will see the diameter for the planned drillhole when you plan the drill canals in SICAT Endo. The drilling diameter corresponds to the diameter of the used drill.

Stone models

Stone models are made by taking an impression of the teeth and are used to define the initial situation for treatment planning. They can be digitized using a 3D scanner. This makes it possible to create optical impressions which are used as basis for planning the SICAT **ACCESSGUIDE** surgical guide.

Surgical guide

A surgical guide based on a SICAT **ACCESSGUIDE** surgical guide model is custom-made for your patient. Once the surgical guide is placed on the patient's teeth, the guide and a sleeve accurately guide your drill to the position you have previously planned.

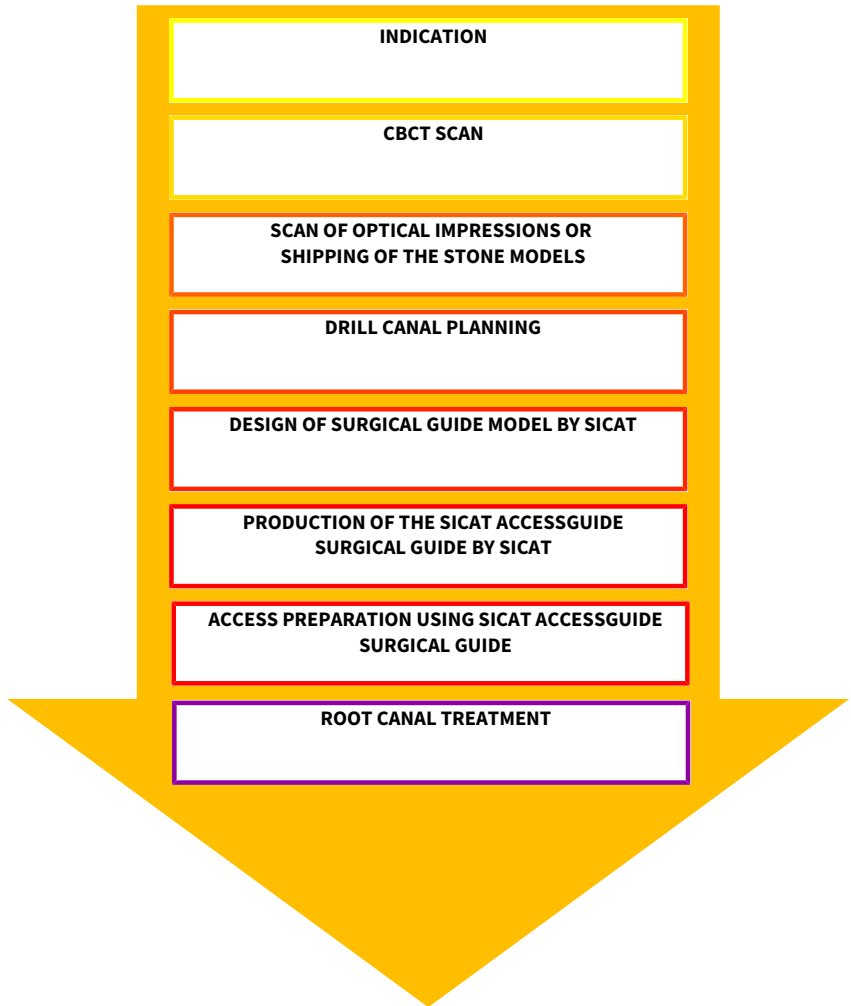
Optical impressions

You can obtain optical impressions by scanning the jaw with a 3D intraoral camera or by digitizing a stone model with a 3D scanner.

4 PLANNING A SURGICAL GUIDE

The SICAT **ACCESSGUIDE** surgical guide is based on the treatment planning that you have performed in SICAT Endo. Based on your planning and a suitable drill sleeve, SICAT designs a digital model of a surgical guide and produces the surgical guide.

4.1 SICAT ACCESSGUIDE WORKFLOW



4.2 PREPARATION OF A SICAT ACCESSGUIDE SURGICAL GUIDE

You can prepare a SICAT **ACCESSGUIDE** surgical guide as follows:

- Optionally, import intraoral scans into SICAT Endo and register the intraoral scans in the 3D X-ray scan.
- Import and register the optical impressions in SICAT Endo.
- Mark the root canals that are to be treated using EndoLines and plan the drill canals.

If you do not have the equipment to produce optical impressions, you may also send the stone models to SICAT. They will produce the optical scans of the stone models for you.

Please refer to the SICAT Endo instructions for use for more detailed information on registering intraoral scans and planning drill canals.

For important information on planning your drill canals, please refer to: *Planning instructions* [▶ Page 14].

For information on creating 3D X-ray scans and optical impressions, please refer to: *Scanning instructions for SICAT ACCESSGUIDE* [▶ Page 15].



WARNING

Inaccurate or incorrect registration of the optical impression with the 3D X-ray scan may result in improper treatment.

Ensure correct registration of the optical impression with the 3D X-ray scan.



WARNING

Optical impressions or stone models that do not match the patient's anatomy may result in treatment mistakes.

Ensure that the optical impressions or the stone model match the patient's anatomy.



WARNING

Insufficient quality and precision of optical impressions and 3D X-ray scans for the purposes of this device may result in improper treatment.

Only use optical impressions and 3D X-ray scans of sufficient quality and precision that is appropriate for the intended use and purpose.



WARNING

Unwanted changes of the dental status could pose a health hazard to the patient.

Ensure that the period of time from creation of the optical impressions or the stone model to treatment is as short as possible.



CAUTION

An incorrect dental status in the stone model or in the optical model could pose a health hazard to the patient or result in improper treatment.

Make sure that the stone model and the optical model reflect the correct dental status and are current when ordering and before you use the surgical guide.



WARNING

Inadequate packaging of stone models could cause damage to the stone models.

Use robust and adequately padded packaging to ship stone models.

5 PLANNING INSTRUCTIONS

Please follow the advice given below when planning your drill canals.

Collision with tooth that is to be treated

Figure 1 shows the collision between a drill sleeve and a tooth that is to be treated. Avoid such a scenario by restricting your planning to the area above the optical impressions in order to prevent overlaps. Otherwise the surgical guide will not fit onto the patient's jaw.

However, such a planning is generally possible even if there is not enough space. Before placing the SICAT **ACCESSGUIDE** surgical guide, the occlusal filling must be removed in this case.

Patient's mouth opening

Figure 2 shows the individual mouth opening which can differ greatly from one patient to another. Adjust the drill canal planning to the patient's individual situation as required.

Please note that it may not be possible to use SICAT **ACCESSGUIDE**, in particular in the posterior region, if the patient's mouth opening is not large enough to insert the drill into the sleeve.

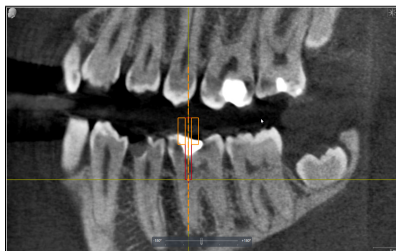


Figure 1: Collision between drill sleeve and tooth



Figure 2: Mouth opening

6 SCANNING INSTRUCTIONS FOR SICAT ACCESSGUIDE

The following pages contain instructions regarding the creation of 3D X-ray scans and optical impressions that are relevant for SICAT **ACCESSGUIDE** surgical guides.

6.1 INSTRUCTIONS FOR 3D X-RAY SCANS

Please follow the instructions below to obtain optimum scanning results:

- Do not scan patients with the occlusion closed. Slightly obstruct bite, for example, by padding it with cotton pads or use a suitable holder.
- Remove non-fixed metal parts from patients' mouth, for example dentures.
- If possible, scan at least 75 % of the arch of the jaw. This increases the probability of you being able to use a sufficient number of artifact-free teeth for registration. With adequate positioning this is also possible in case of 3D X-ray scans having a volume of 5 cm x 5 cm.
- For better representation of the mucosa in the 3D scan, you can separate jaw and lip or cheek using cotton rolls.

6.2 INSTRUCTIONS FOR OPTICAL IMPRESSIONS

If possible, scan at least 75 % of the arch of the jaw in order to ensure that the surgical guide is securely placed and to increase the probability of you being able to use a sufficient number of artifact-free teeth for registration.



WARNING

Inaccurate or incorrect registration of the optical impression with the 3D X-ray scan may result in improper treatment.

Ensure correct registration of the optical impression with the 3D X-ray scan.



WARNING

Optical impressions or stone models that do not match the patient's anatomy may result in treatment mistakes.

Ensure that the optical impressions or the stone model match the patient's anatomy.



WARNING

Insufficient quality and precision of optical impressions and 3D X-ray scans for the purposes of this device may result in improper treatment.

Only use optical impressions and 3D X-ray scans of sufficient quality and precision that is appropriate for the intended use and purpose.



WARNING

Unwanted changes of the dental status could pose a health hazard to the patient.

Ensure that the period of time from creation of the optical impressions or the stone model to treatment is as short as possible.



CAUTION

An incorrect dental status in the stone model or in the optical model could pose a health hazard to the patient or result in improper treatment.

Make sure that the stone model and the optical model reflect the correct dental status and are current when ordering and before you use the surgical guide.

6.3 PREVENTING POTENTIAL ERRORS

Patient movement

Figure 1: If the patient inadvertently moves during the scanning process, movement artifacts are caused which will blur the scan. Artifacts like this make it hard to register optical impressions and 3D X-ray scans. Thus, it is important that you tell the patient before the 3D X-ray scan not to move throughout the entire scanning procedure. If a scan does contain movement artifacts, exact registration is not possible. SICAT is not able to manufacture surgical guides based on such 3D X-ray scans. It is necessary to make a new 3D X-ray scan.

Metal artifacts

Figure 2: The exact shape of a tooth that has been restored using metal or ceramic materials cannot be accurately reconstructed in the 3D X-ray scan due to metal artifacts. You can use these teeth, and in many cases the adjacent teeth as well, which are affected by such metal artifacts neither for registration nor for assessment of a registration.

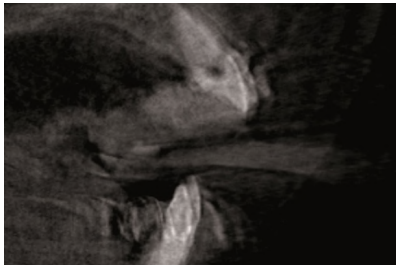


Figure 1: Patient movement

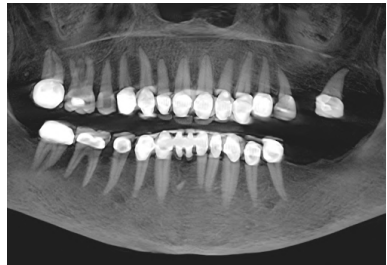


Figure 2: Metal artifacts

Optical impressions do not match the jaw situation

Figure 3: SICAT manufactures the surgical guides based on optical impressions. Incorrect scan data can result in a surgical guide not fitting accurately onto the patient's jaw. It is therefore essential for you to ensure that the optical impressions exactly match the patient's situation.



Figure 3: Optical impressions do not match the jaw situation



WARNING

Insufficient quality and precision of optical impressions and 3D X-ray scans for the purposes of this device may result in improper treatment.

Only use optical impressions and 3D X-ray scans of sufficient quality and precision that is appropriate for the intended use and purpose.



WARNING

Unwanted changes of the dental status could pose a health hazard to the patient.

Ensure that the period of time from creation of the optical impressions or the stone model to treatment is as short as possible.



WARNING

Optical impressions or stone models that do not match the patient's anatomy may result in treatment mistakes.

Ensure that the optical impressions or the stone model match the patient's anatomy.



WARNING

Inaccurate or incorrect registration of the optical impression with the 3D X-ray scan may result in improper treatment.

Ensure correct registration of the optical impression with the 3D X-ray scan.

7 ORDERING A SURGICAL GUIDE

The following pages provide a summary of all important shipping information for the surgical guide ordering process from SICAT Endo:

- SICAT **ACCESSGUIDE** (option 1), with integrated optical impressions
- SICAT **ACCESSGUIDE** (option 2), without integrated optical impressions

7.1 ORDERING AN ACCESSGUIDE SURGICAL GUIDE (OPTION 1)

With integrated optical impressions:

SICAT manufactures the patient-specific **ACCESSGUIDE** surgical guide for you. Please use the order wizard in SICAT Endo only.

- You can transmit your order to SICAT online via the order wizard.
- You can view and edit your orders at all times in the SICAT Portal.

7.2 ORDERING AN ACCESSGUIDE SURGICAL GUIDE (OPTION 2)

Without integrated optical impressions:

SICAT manufactures the patient-specific **ACCESSGUIDE** surgical guide for you. Please send the following components to:



SICAT GmbH & Co. KG
Digital Manufacturing
Friesdorfer Str. 131-135
53175 Bonn, Germany

1. **Stone model**
2. **Dispatch note for identification of the stone model**



The easiest way to send a case is to use the SICAT Online Pick-Up Service. To arrange the pick-up, please visit our SICAT Portal by opening <http://www.sicat.com> and clicking the link to the SICAT Portal. If you have not registered yet, you can set up an account there.



CAUTION

Missing and incorrect components in the order package may result in a faulty surgical guide.

Make sure that the necessary and correct components are included in your order package.



WARNING

Inadequate packaging of stone models could cause damage to the stone models.

Use robust and adequately padded packaging to ship stone models.



CAUTION

Missing label of the plaster model could result in an incorrect assignment of the patient and the plaster model.

Label the plaster model with the patient information.



CAUTION

An incorrect treatment plan may pose a health hazard to the patient or lead to a wrong treatment.

Make sure that your order has been created for the correct treatment plan.

NOTICE

Please ensure that you send patient-specific data in anonymised form.

8 UNPACKING THE SURGICAL GUIDE

When unpacking your surgical guide please check the following:

- Check the contents of the shipping box for completeness:
 - Surgical guide report
 - Instructions for use
 - Correct number of surgical guides
 - Correct number of drills (optional): When ordering via SICAT
- Check whether the number of surgical guides matches the number of planned drill canals. If the numbers do not match, please contact the SICAT surgical guide support.
- Ensure that the surgical guides are undamaged. Damaged surgical guides must not be used. They pose an increased risk of injury to the patient, which must be prevented under any circumstance.
- Check the information on the surgical guide report. Make sure that any information featuring there is correct and matches your planning. Check whether the information in the report matches the information of the patient who is to be treated.



WARNING

A damaged surgical guide may pose a health hazard.

Check the surgical guide for damage before using it. Examples of such damage include deformations, cracks, breaks, gaps, and loose parts.

9 HANDLING OF THE SURGICAL GUIDE

Before you use your surgical guide please observe the following instructions:

- Protect the guide from direct sunlight and high temperatures to prevent the surgical guide from deforming.
- Check the surgical guide before the treatment and before placing the rubber dam. Check that the surgical guide can be firmly and correctly placed using the stone model, if available, or in the patient's mouth. Ensure that the position of the drill sleeves matches your planning. If the surgical guide does not pass this check, you must not use it.
- You must disinfect the surgical guide prior to use. Only use substances for disinfection that are approved for this purpose.
- Check the drills and drill sleeves that are to be used for damage before using the surgical guide. To prevent the drill from getting wedged in a sleeve, use only flawless drills and sleeves.
- Ensure, during the use of the surgical guide, that you are able to place the guide onto the teeth accurately and without play. Otherwise, a decrease in drilling accuracy is to be expected.



WARNING

Use of an unsuitable drill could pose a health hazard to the patient or result in improper treatment.

Use a suitable drill.



WARNING

Using a drill and a drill sleeve that are not meant to be combined could pose a health hazard to the patient.

Ensure that the drill you want to use matches the drill sleeve of the surgical guide.



WARNING

Inadequate fixing of the surgical guide on the patient's teeth could pose a health hazard to the patient.

Fix the surgical guide without exerting too much pressure. Ensure that the guide fits precisely such that the drill sleeve is positioned correctly as planned.



WARNING

Exerting too much pressure when placing the surgical guide or during drilling could pose a health hazard to the patient or result in improper treatment.

Only use as much force as necessary when inserting the surgical guide and during drilling.



WARNING

A damaged surgical guide could pose a health hazard to the patient.

Never use a damaged surgical guide. Examples of such damage include deformations, cracks, breaks, gaps, and loose parts.



WARNING

Exposure to direct sunlight could result in damage to the surgical guide.

Protect the surgical guide from exposure to direct sunlight and high temperatures.



WARNING

Inadequate fitting of the surgical guide on the patient's teeth could pose a health hazard to the patient.

Check that the surgical guide is correctly and firmly placed before starting to drill.



WARNING

Failure to clean or disinfect the surgical guide before use could pose a health hazard to the patient.

Clean and disinfect the surgical guide before first use.



WARNING

The use of unsuitable disinfectants and application of an incorrect disinfection process for the surgical guide could result in damage.

Only use disinfectants and/or disinfection processes that are suitable for PMMA (Poly(methyl methacrylate)) materials.



WARNING

A heat-based disinfection or sterilization method (e. g. autoclaving) could result in damage to the surgical guide.

Never use a heat-based method for disinfection or sterilization of the surgical guide.

9.1 USING ORTHOGRADE SICAT ACCESSGUIDE SURGICAL GUIDES



WARNING

Use of the surgical guide after the end of its service life may pose a health hazard to the patient.

Ensure that the surgical guide is not used after the end of its service life, i. e. 3 months after manufacture.

In this chapter you will learn how to use an orthograde SICAT **ACCESSGUIDE** surgical guide. Some steps are optional and can be left out.

Checking the placement of the surgical guide

- Check that the surgical guide is correctly and firmly placed in the patient's mouth.
- Ensure that the position of the drill sleeve matches your planning.
- If the surgical guide does not pass this check, you must not use it.



Figure 1: Placing the surgical guide



Figure 2: Checking the placement of the surgical guide



WARNING

If the patient has not enough teeth remaining in his or her mouth this could result in improper treatment.

Check whether the patient has enough teeth remaining to ensure that the surgical guide can be correctly and firmly placed.



WARNING

Failure to take the patient's medical history into account could pose a health hazard to the patient.

Consider the patient's medical history before treatment. Pre-existing conditions include, for example, allergies, especially to materials used in dental care, asthma or other relevant health problems.



WARNING

Inadequate fitting of the surgical guide on the patient's teeth could pose a health hazard to the patient.

Check that the surgical guide is correctly and firmly placed before starting to drill.



WARNING

Exerting too much pressure when placing the surgical guide or during drilling could pose a health hazard to the patient or result in improper treatment.

Only use as much force as necessary when inserting the surgical guide and during drilling.

9 HANDLING OF THE SURGICAL GUIDE

Instructions on how to use a rubber dam

You can use the SICAT **ACCESSGUIDE** surgical guide with a rubber dam. Please follow the instructions below in this case:

- Before placing the rubber dam, check that the surgical guide is correctly placed in the patient's mouth.
- The rubber dam must be placed before you start the treatment.
- All teeth on which the appliance is resting must stand out from the rubber dam.
- The clamps for the rubber dam must be spaced as far apart that the surgical guide fits between them.
- Ensure that the surgical guide does not touch the clamps of the rubber dam.



Figure 1: Placing the surgical guide



Figure 2: Rubber dam with clamps



WARNING

Changes to the surgical guide may pose a health hazard to the patient or result in improper treatment.

Do not make any changes to the surgical guide.

Preparing the tooth

1. Check whether the spot marked by the surgical guide is the spot that you want to trepanize.
2. In addition, you can mark the corresponding spot on the enamel using a color marker (caries detector, jeweler's rouge) or a thin, rotating tool (e. g. fissure burs).



Figure 1: Marking the tooth



Figure 2: Checking the mark

3. Check the marked spot with the surgical guide placed.
4. Remove the enamel or the restorations at the marked spot down to the dentine in the axis of the drill sleeve using a diamond-coated tool. So as not to damage the sleeve you should not work through the sleeve.

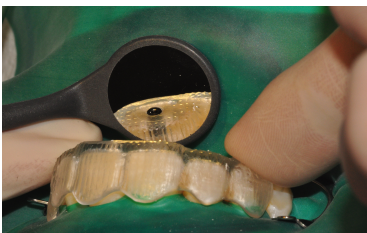


Figure 3: Checking mark with surgical guide



Figure 4: Ablating enamel



WARNING

Failure to prepare the surface of the tooth or the drill point could pose a health hazard to the patient.

Before you start to drill, you must prepare the surface of the tooth for drilling, e. g. by removing enamel or restorations or creating a surface that is as orthogonal to the direction of drilling as possible.

Preparing the drilling process

1. Place the surgical guide again and check that the surgical guide is correctly and firmly placed in the patient's mouth.
2. Transfer the drill depth that you have planned in SICAT Endo using a ruler and a rubber stop.
3. Insert the drill into the drill sleeve.
4. Ensure that the drill is not rotating when it is inserted as it might get wedged and damage the drill sleeve.
5. If you have trouble inserting the drill, insert the drill into the sleeve before attaching the drill to the tool holder.

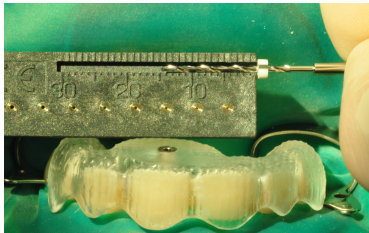


Figure 1: Transferring the drill depth



Figure 2: Inserting the drill into the drill sleeve



WARNING

Inadequate fitting of the surgical guide on the patient's teeth could pose a health hazard to the patient.

Check that the surgical guide is correctly and firmly placed before starting to drill.



WARNING

Inadequate fixing of the surgical guide on the patient's teeth could pose a health hazard to the patient.

Fix the surgical guide without exerting too much pressure. Ensure that the guide fits precisely such that the drill sleeve is positioned correctly as planned.



WARNING

Using a drill and a drill sleeve that are not meant to be combined could pose a health hazard to the patient.

Ensure that the drill you want to use matches the drill sleeve of the surgical guide.



WARNING

Use of an unsuitable drill could pose a health hazard to the patient or result in improper treatment.

Use a suitable drill.



WARNING

Improper use of the surgical guide could pose a health hazard to the patient.

Use the surgical guide in accordance with the enclosed report and the following drilling instructions only:

- ▶ When the drill is first inserted into the sleeve it must not be rotating.
- ▶ Guided drilling must always be performed using an intermittent technique with continuous water cooling.
- ▶ Comply with the drill manufacturer's instructions.

Instructions on how to use the drill

Please comply with the following instructions when using the drill:

- If required, start with a shorter drill before you change to a longer drill.
- Use a rubber stop to set the exact drill depth on the drill.
- The penetration depth that you have set using the rubber stop must not be exceeded.
- Comply with the manufacturer's recommendations regarding the frequency of use of the drill.

Drilling

1. Fix the surgical guide in the patient's mouth.
2. Perform the drilling using continuous, slight pressure under permanent cooling. Use an intermittent technique.
3. Comply with the rotational speed indicated by the drill manufacturer during drilling.



Figure 1: Drilling



Figure 2: Flushing the drill canal

4. If the drill fails to advance when you exert a slight pressure, it might still be in the enamel or a restoration might be in contact with the tip of the drill. If this is the case, you have to repeat the steps described in section **Preparing the tooth**.

10 DISPOSAL

5. Remove any dentine residues on the drill and in the drill hole by flushing the drill canal at regular short intervals. Otherwise, they could impede the advance of the drill.
6. Regularly check that the drill and the drill sleeve remain undamaged.
7. Verify the correct position of the rubber stop on the drill before you have reached the final drilling depth.
8. Stop drilling as soon as the rubber stop touches the upper edge of the sleeve.



WARNING

Changes to the surgical guide may pose a health hazard to the patient or result in improper treatment.

Do not make any changes to the surgical guide.

10 DISPOSAL

Please dispose of the surgical guide in accordance with the regulations for disposing of infectious materials applicable in your country.

11 REPORTING

If serious incidents (such as severe injuries) occur in connection with the product, these must be reported to the manufacturer and the competent authority.

12 SICAT DOCUMENTATION

The following documents will be included with your delivery of the custom-made surgical guide from SICAT:

Report

A main component of the report is information on the length of the planned drilling canals. The report includes the distances from the upper edge of the drill sleeve to the target point of the drill canal.

In addition, the report contains the following information:

- Interior diameter of the sleeve used
- Root canal description from SICAT Endo
- Order information

You will also find information on how to perform the drilling process in the report.

Test certificate

The test certificate states any deviations of the actual sleeve position compared to digital treatment planning. SICAT guarantees a manufacturing accuracy with a max. deviation of 0.5 mm at the apical end of the drilled hole.

Declaration of Conformity

SICAT confirms in the declaration of conformity that the surgical guide complies with all EU directives applying to the product. In addition, you will find a product description on the declaration of conformity next to the manufacturer's address.

13 SAFETY INSTRUCTIONS

Order



CAUTION

Missing and incorrect components in the order package may result in a faulty surgical guide.

Make sure that the necessary and correct components are included in your order package.



CAUTION

Missing label of the plaster model could result in an incorrect assignment of the patient and the plaster model.

Label the plaster model with the patient information.



WARNING

Inadequate packaging of stone models could cause damage to the stone models.

Use robust and adequately padded packaging to ship stone models.



CAUTION

An incorrect treatment plan may pose a health hazard to the patient or lead to a wrong treatment.

Make sure that your order has been created for the correct treatment plan.

Drill



WARNING

Using a drill and a drill sleeve that are not meant to be combined could pose a health hazard to the patient.

Ensure that the drill you want to use matches the drill sleeve of the surgical guide.



WARNING

Use of an unsuitable drill could pose a health hazard to the patient or result in improper treatment.

Use a suitable drill.

13 SAFETY INSTRUCTIONS

Surgical guide



WARNING

Exposure to direct sunlight could result in damage to the surgical guide.

Protect the surgical guide from exposure to direct sunlight and high temperatures.



WARNING

A damaged surgical guide may pose a health hazard.

Check the surgical guide for damage before using it. Examples of such damage include deformations, cracks, breaks, gaps, and loose parts.



WARNING

Inadequate fitting of the surgical guide on the patient's teeth could pose a health hazard to the patient.

Check that the surgical guide is correctly and firmly placed before starting to drill.

Changes to the surgical guide



WARNING

Changes to the surgical guide may pose a health hazard to the patient or result in improper treatment.

Do not make any changes to the surgical guide.

Cleaning



WARNING

Failure to clean or disinfect the surgical guide before use could pose a health hazard to the patient.

Clean and disinfect the surgical guide before first use.



WARNING

The use of unsuitable disinfectants and application of an incorrect disinfection process for the surgical guide could result in damage.

Only use disinfectants and/or disinfection processes that are suitable for PMMA (Poly(methyl methacrylate)) materials.

13 SAFETY INSTRUCTIONS



WARNING

A heat-based disinfection or sterilization method (e. g. autoclaving) could result in damage to the surgical guide.

Never use a heat-based method for disinfection or sterilization of the surgical guide.

Optical impressions



WARNING

Inaccurate or incorrect registration of the optical impression with the 3D X-ray scan may result in improper treatment.

Ensure correct registration of the optical impression with the 3D X-ray scan.



WARNING

Insufficient quality and precision of optical impressions and 3D X-ray scans for the purposes of this device may result in improper treatment.

Only use optical impressions and 3D X-ray scans of sufficient quality and precision that is appropriate for the intended use and purpose.



WARNING

Optical impressions or stone models that do not match the patient's anatomy may result in treatment mistakes.

Ensure that the optical impressions or the stone model match the patient's anatomy.



WARNING

Unwanted changes of the dental status could pose a health hazard to the patient.

Ensure that the period of time from creation of the optical impressions or the stone model to treatment is as short as possible.

13 SAFETY INSTRUCTIONS



CAUTION

An incorrect dental status in the stone model or in the optical model could pose a health hazard to the patient or result in improper treatment.

Make sure that the stone model and the optical model reflect the correct dental status and are current when ordering and before you use the surgical guide.

Qualification of the user



CAUTION

Federal Law (USA) restricts use of this device to or on the order of a physician, dentist or licensed practitioner.



WARNING

Use of the surgical guides by unqualified personnel could pose a health hazard to the patient or lead to improper treatment.

The surgical guides may only be used by qualified personnel.

Usage



WARNING

Failure to take the patient's medical history into account could pose a health hazard to the patient.

Consider the patient's medical history before treatment. Pre-existing conditions include, for example, allergies, especially to materials used in dental care, asthma or other relevant health problems.



WARNING

If the patient has not enough teeth remaining in his or her mouth this could result in improper treatment.

Check whether the patient has enough teeth remaining to ensure that the surgical guide can be correctly and firmly placed.



WARNING

Improper use of the surgical guide could pose a health hazard to the patient.

Use the surgical guide in accordance with the enclosed report and the following drilling instructions only:

- ▶ When the drill is first inserted into the sleeve it must not be rotating.
- ▶ Guided drilling must always be performed using an intermittent technique with continuous water cooling.
- ▶ Comply with the drill manufacturer's instructions.



WARNING

Failure to prepare the surface of the tooth or the drill point could pose a health hazard to the patient.

Before you start to drill, you must prepare the surface of the tooth for drilling, e. g. by removing enamel or restorations or creating a surface that is as orthogonal to the direction of drilling as possible.



WARNING

Inadequate fixing of the surgical guide on the patient's teeth could pose a health hazard to the patient.

Fix the surgical guide without exerting too much pressure. Ensure that the guide fits precisely such that the drill sleeve is positioned correctly as planned.



WARNING

Exerting too much pressure when placing the surgical guide or during drilling could pose a health hazard to the patient or result in improper treatment.

Only use as much force as necessary when inserting the surgical guide and during drilling.

13 SAFETY INSTRUCTIONS

Damage



WARNING

A damaged surgical guide could pose a health hazard to the patient.

Never use a damaged surgical guide. Examples of such damage include deformations, cracks, breaks, gaps, and loose parts.

Service life



WARNING

Use of the surgical guide after the end of its service life may pose a health hazard to the patient.

Ensure that the surgical guide is not used after the end of its service life, i. e. 3 months after manufacture.

14 MANUFACTURER AND SUPPORT



Manufacturer

SICAT GmbH & Co. KG

Friesdorfer Str. 131-135

53175 Bonn, Germany

www.sicat.com

Support

Telephone: +49 228 286206600

E-mail: sgl@sicat.com

Copyright

All rights reserved. Copying this operating manual, parts thereof, or any translation is not allowed without the written consent of SICAT.

The information in this document was correct at the time of publication, but may be subject to change without notice.





CONTACT



MANUFACTURER

SICAT GMBH & CO. KG

FRIESDORFER STR. 131-135

53175 BONN, GERMANY

WWW.SICAT.COM

SUPPORT

TELEPHONE: +49 228 286206600

E-MAIL: SGL@SICAT.COM



DOCUMENT ID: DD33IFU002
MATERIAL NUMBER: 10670EN
CHANGE NUMBER: 500204