

DIGITALGUIDE FOR FULLY EDENTULOUS PATIENTS

In this **quick guide**, you will learn which steps are required to obtain a **DIGITALGUIDE** (STL file of your surgical guide) for a fully edentulous patient.

Note: Please note that this workflow is **only available with the regular DIGITALGUIDE workflow** and **not yet** with the RAPID DIGITALGUIDE workflow.

Before you start

- Please read the complete quick guide before you begin.
- For comprehensive product information, please use the instructions for use of the SICAT Suite applications. These are available online at <https://www.sicat.com/manuals>.

What you need

A. Prosthesis

The patient's prosthesis must be clean, relined and well-fitting on the patient's jaw. The prosthesis must not contain any metal in order to avoid incorrect matching due to artifacts.



B. Marker

Please use Suremark VF-20 markers. You can purchase these markers at <https://www.suremark.com/>.



What to prepare

1. Marker placement

Place **6 markers** on the prosthesis. Markers should be evenly distributed and placed on the buccal and lingual sides. **Make sure that the markers stick firmly on the prosthesis.**



SICAT 

 MANUFACTURER
SICAT GMBH & CO. KG
FRIESDORFER STR. 131-135
53175 BONN, GERMANY
WWW.SICAT.COM

CE 0197

CE MARKING FOR SICAT IMPLANT
2.0

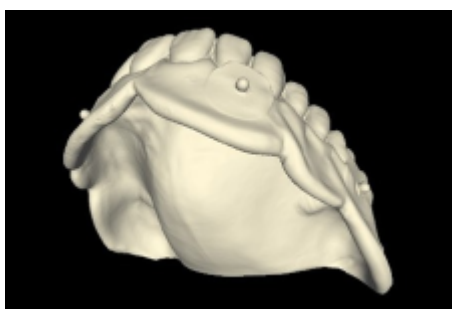
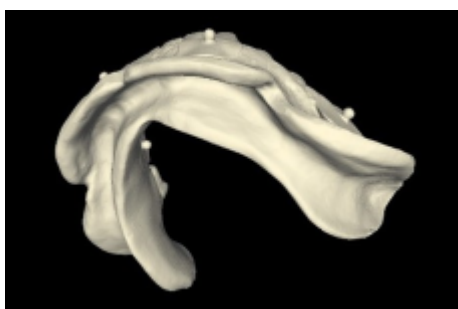
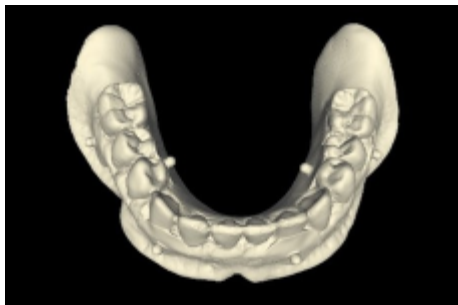
SUPPORT
TELEPHONE: +49 228 286206600
E-MAIL: SGL@SICAT.COM



DD30QUG002
REVISION: 2024-04-24
PAGE: 1 / 2

2. Optical scan of prosthesis

Scan the prosthesis with attached markers using an **intraoral scanner** (z. B. Cerec Primescan, iTero etc.) or a **lab scanner**. The scan must show the **complete denture**, i.e., the outer (occlusal/polished) and inner (intaglio/fitting) surfaces. Depending on your scanner it might be necessary to use **scan spray** to get a representation without holes.



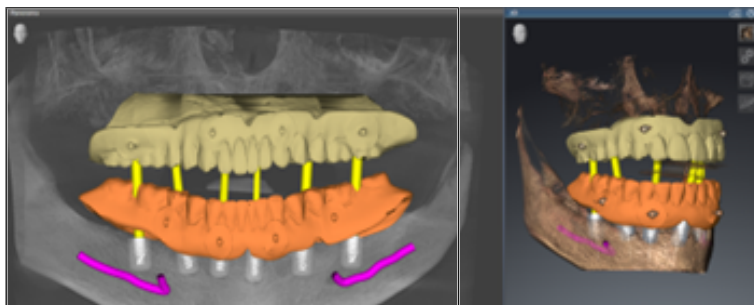
3. Patient scan

Take a **CBCT scan of the patient** wearing the prosthesis with attached markers. Separate cheeks/lips with cotton rolls from the prosthesis to make it distinguishable from soft tissue. The markers should **not** be directly in contact with soft tissue. This also helps to verify correct matching of optical scan and CBCT scan. **Ensure that the prosthesis is in the correct and unique position during scanning.**

To ensure that there is **no gap between the gingiva and the prosthesis** during the CBCT scan, use cotton rolls between the molars and have the patient bite down. In this case, the use of the chin rest is recommended.

4. Matching and implant planning in SICAT Implant 2.0

Match the optical prosthesis scan with the CBCT scan using the markers and plan your implants.



5. Ordering

Order the **DIGITALGUIDE** as usual.

SICAT 

 **MANUFACTURER**
SICAT GMBH & CO. KG
FRIESDORFER STR. 131-135
53175 BONN, GERMANY
WWW.SICAT.COM

CE 0197

CE MARKING FOR SICAT IMPLANT
2.0

SUPPORT

TELEPHONE: +49 228 286206600

E-MAIL: SGL@SICAT.COM



DD30QUG002

REVISION: 2024-04-24

PAGE: 2 / 2