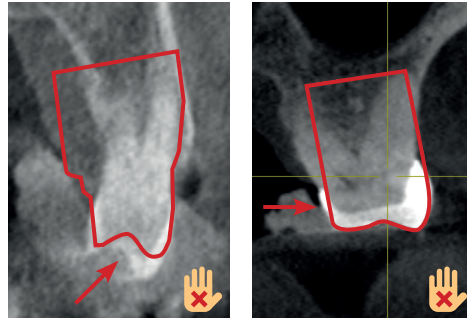


DO'S

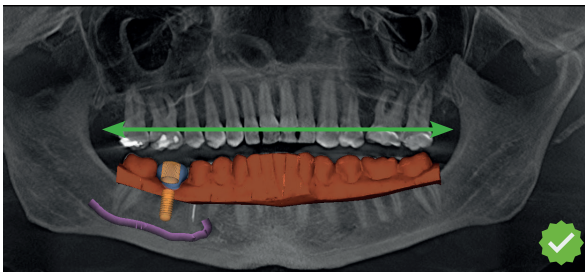


Correct optical registration

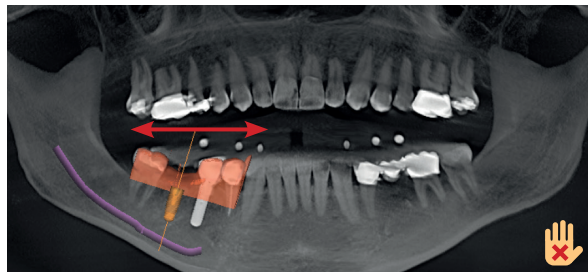
DON'TS



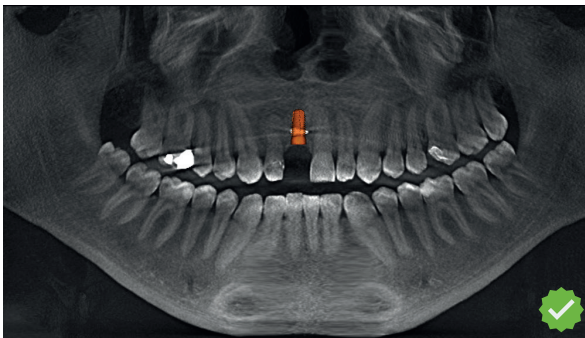
Incorrect optical registration



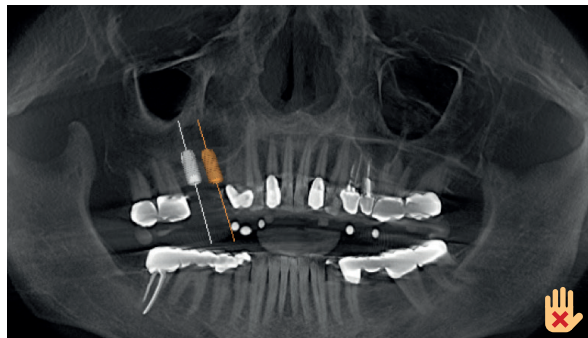
Sufficient optical scan



Insufficient optical scan



Negligible metal artifacts



Extensive metal artifacts



Scan part of the mucosa to better evaluate the registration!



In case of doubt, scan patient with a bite plate so you can switch to CLASSICGUIDE if necessary!