



HOW TO PREPARE IMPRESSIONS

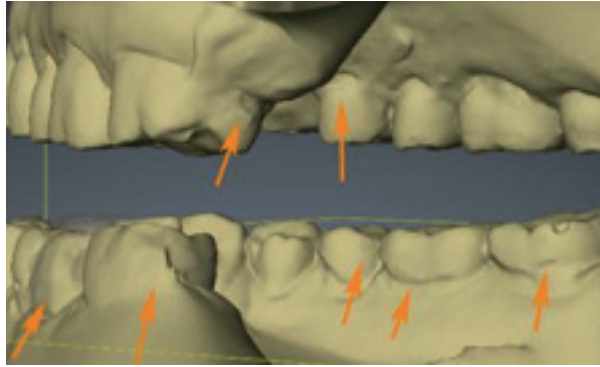
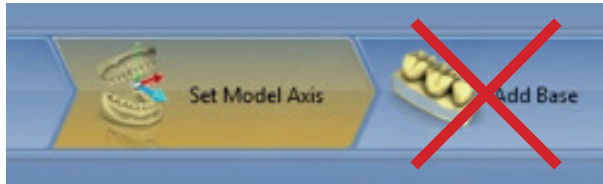
Quick Guide

HOW TO PREPARE IMPRESSIONS

Quick Guide

FOR DIGITAL MODELS

- Always use a CEREC scanner for the optical surface scan of the patient's teeth. The manual can be found here:
CEREC: <http://manuals.sirona.com/home.HomeDmsDocument.download.html?id=5711>
CEREC Ortho: <http://manuals.sirona.com/en/search.html?q=cerec+software>
- If you use the CEREC Ortho software, please do not use the option for adding a socket to the digital model.



Please ensure that **all details are captured properly** by the camera.

FOR STONE MODELS:

- If you do not own a CEREC system, if you prefer to capture the CEREC optical scan from stone models or if there is too much metal in the teeth, we suggest taking impressions using accurate and stable impression material. **Avoid using alginate material if possible!** We suggest pouring the models using a hard plaster, such as Type-4 stone.
- Please use current stone models that represent the current intraoral situation and are less than three months old. This ensures that the resulting **OPTISLEEP** therapeutic appliance will be more effective and fit properly.

SICAT 

 **MANUFACTURER**

SICAT GMBH & CO. KG
FRIESDORFER STR. 131-135
53177 BONN, GERMANY
WWW.SICAT.COM

**SICAT OPTISLEEP
SUPPORT**

TEL +49 228 286206-640
FAX +49 228 286206-971
SUPPORT@SICAT.COM

D32QUG006

LAST UPDATE:
2021-01-01