



HOW TO ORDER OPTISLEEP WITH A STONE MODEL SCAN

Quick Guide

HOW TO ORDER OPTISLEEP WITH A STONE MODEL SCAN

Quick Guide

If you don't have a 3D x-ray scan of the patient in protruded position you may use an alternative workflow and scan a stone model of the patient in protruded position. Be aware that this workflow does not allow the evaluation of the patient's airway.

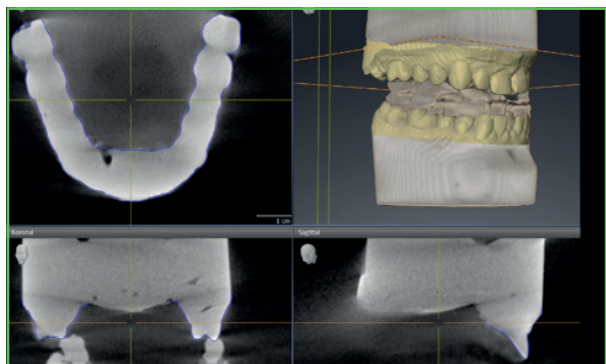
- Take impressions of the patient's mandible and maxilla.
- Prepare stone models of mandible and maxilla and let the stone models harden at least 24h.
- Conduct a CEREC scan of the patient's mandible and maxilla of both arches (if you don't have a CEREC unit please send the models and the George Gauge via our pick-up service).
- Define the treatment position with the George Gauge. Please refer to the Quick Guide "How to calculate the treatment position for the George Gauge".
- Prepare the George Gauge bite fork in treatment position. Make sure you use sufficient amounts of bite registration material. Please refer to the tutorial video "Setting the grade of protrusion" on www.sicat.com for more information.



- Put the George Gauge bite fork between the mandible and maxilla of the stone model. **Avoid any gap.**
- To guarantee a good fit you might have to **cut off excessive material** of the registrate.



- To secure the position of models and George Gauge you may use a **rubber band** around the models.
- Place the stone models horizontally and without tilting as close to the front as possible.
- Scan the model including the bite fork with your 3D x-ray system according to the **operating instructions** for the template holder: [http://manuals.sirona.com/de/bildgebende-systeme/3d-roentgeneraete/galileos-comfortplus.html?l\[\]=de&l\[\]=en](http://manuals.sirona.com/de/bildgebende-systeme/3d-roentgeneraete/galileos-comfortplus.html?l[]=de&l[]=en)



- Import the 3D x-ray data into SICAT Air.
- Integrate the optical surface data from the CEREC scan (or send the stone model with the George Gauge to SICAT via our pick-up service).
- Place an order for an **OPTISLEEP** therapeutic appliance.

— For complete product information, please refer to the instructions for use —

SICAT 

 **MANUFACTURER**

SICAT GMBH & CO. KG
FRIESDORFER STR. 131-135
53177 BONN, GERMANY
WWW.SICAT.COM

**SICAT OPTISLEEP
SUPPORT**

TEL +49 228 286206-640
FAX +49 228 286206-971
SUPPORT@SICAT.COM

D32QUG002

LAST UPDATE:
2021-01-01